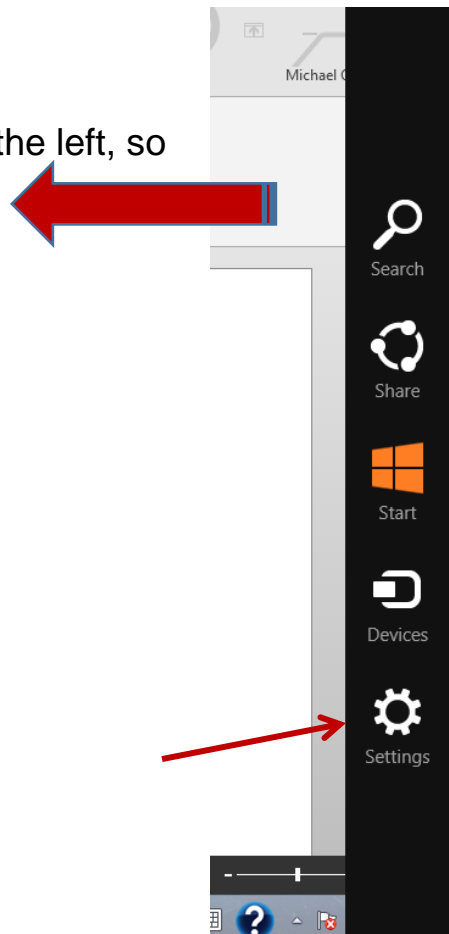
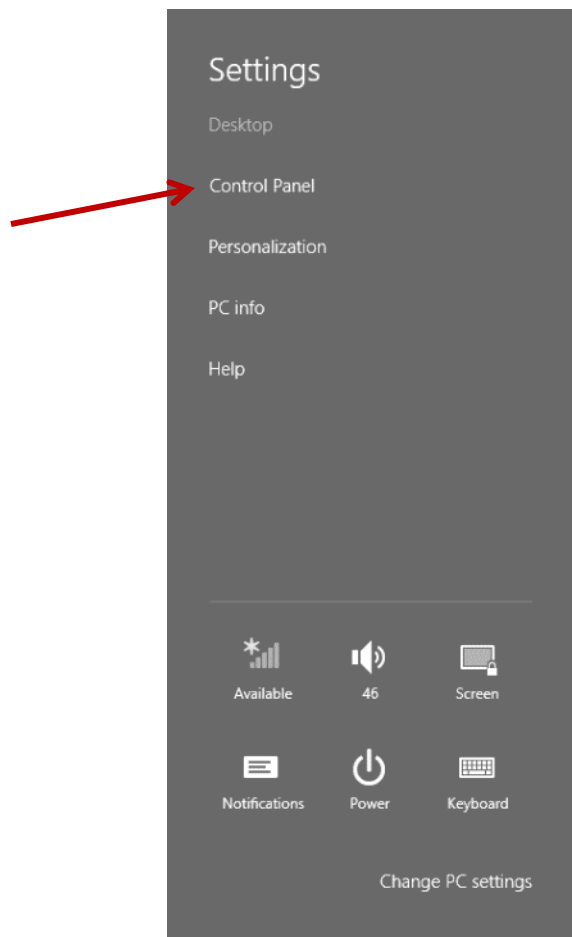


1. Swipe in from the right side of you tablet to the left, so the charms bar pops out.

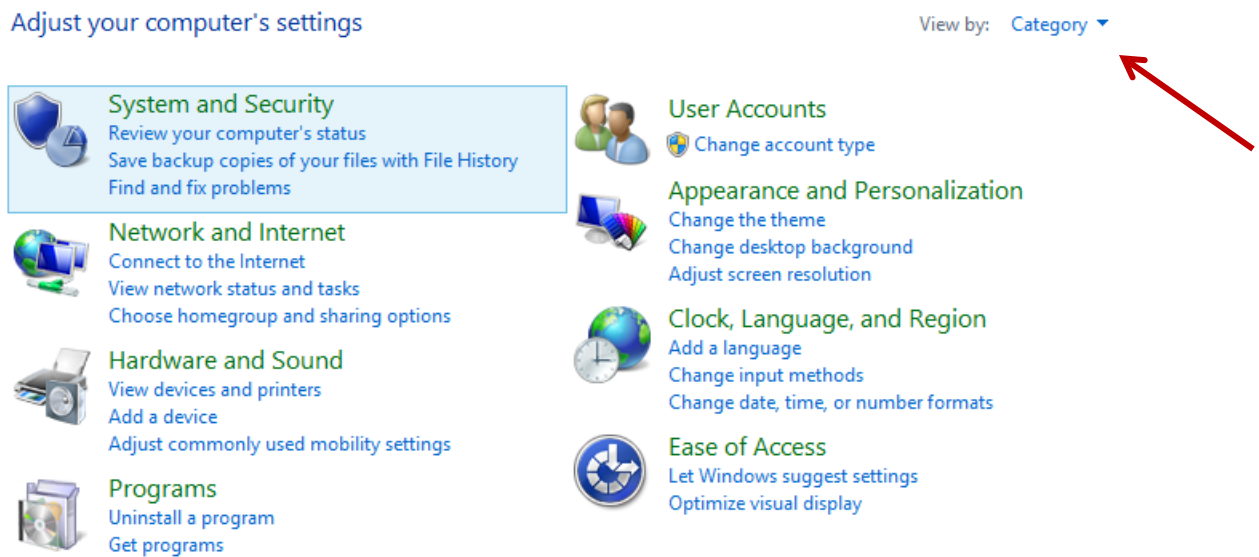


2. Click “Settings”, then “Control Panel”.

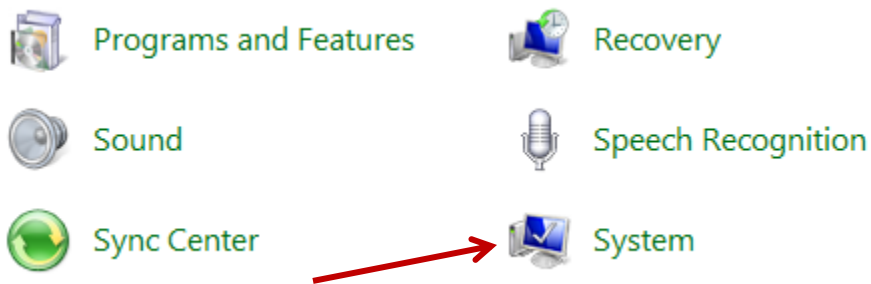


\*If the right hand of the control panel says “View by: Large icons” go to next step. If not, click categories and choose “View by: Large icons”.\*

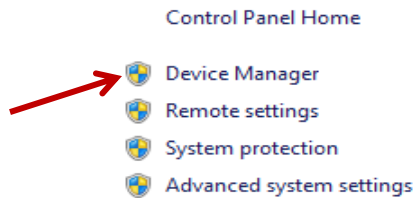
3. Click “Category” and select “Large Icons”.



4. Scroll down to System and click it one time.



## 5. Select “Device Manager”.



## View basic information about your computer

Windows edition

Windows 8 Pro

© 2012 Microsoft Corporation. All rights reserved.

System

Rating: [System rating is not available](#)

Processor: Intel(R) Atom(TM) CPU Z2760 @ 1.80GH

Installed memory (RAM): 2.00 GB

System type: 32-bit Operating System, x86-based proc

Pen and Touch: Pen and Full Windows Touch Support wi

Computer name, domain, and workgroup settings

Computer name: cdoatmgrant01b

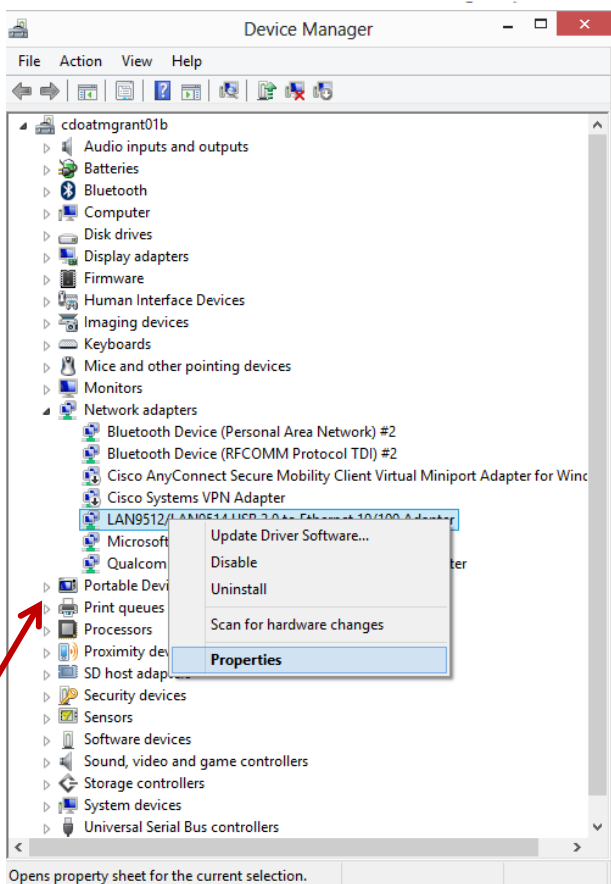
Full computer name: cdoatmgrant01b.CCSD.local

Computer description:

Domain: CCSD.local

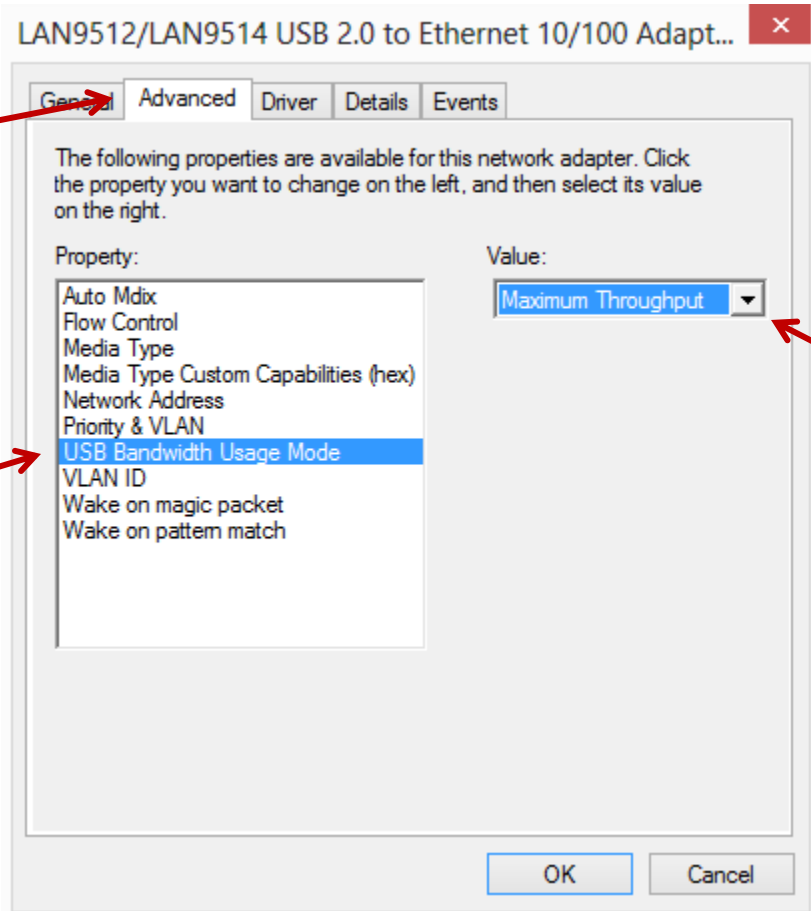
Windows activation

Product ID: Not Available



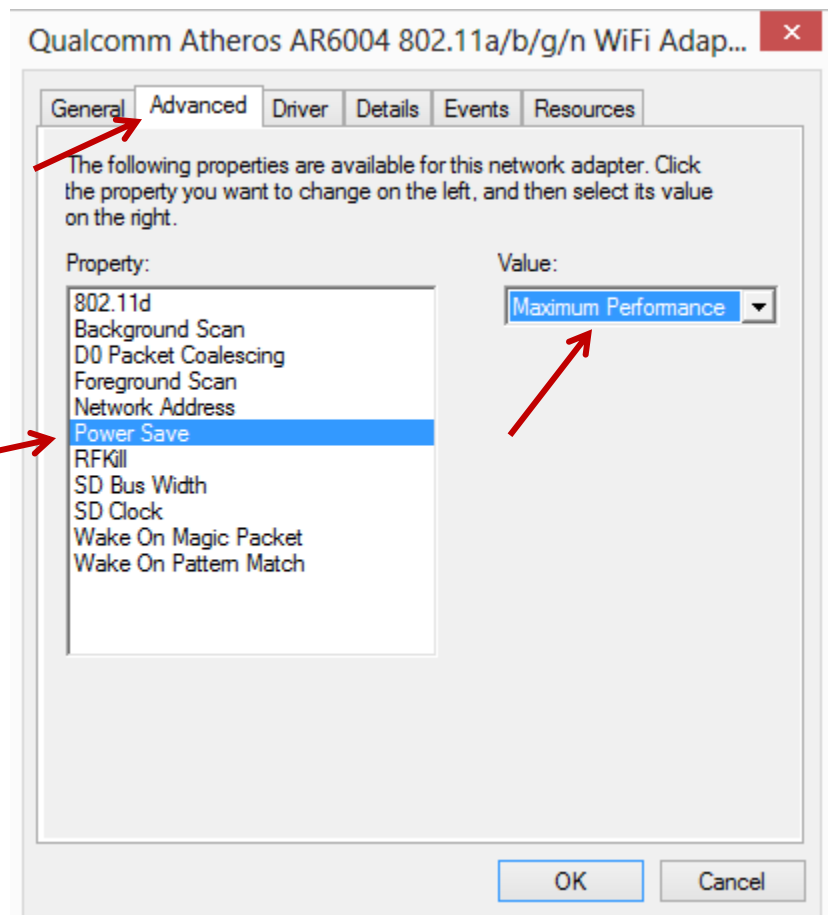
6. Click the arrow out beside Network adapters and select “LAN9512/LAN9514 USB 2.0 Ethernet 10/100 Adapter”. Right click and select “properties” and left click it one time.

7. Select the “Advanced” tab. In the Property: window, select “USB Bandwidth Usage Mode” and change the value from Automatic to Maximum Throughput. Then click “ok”.

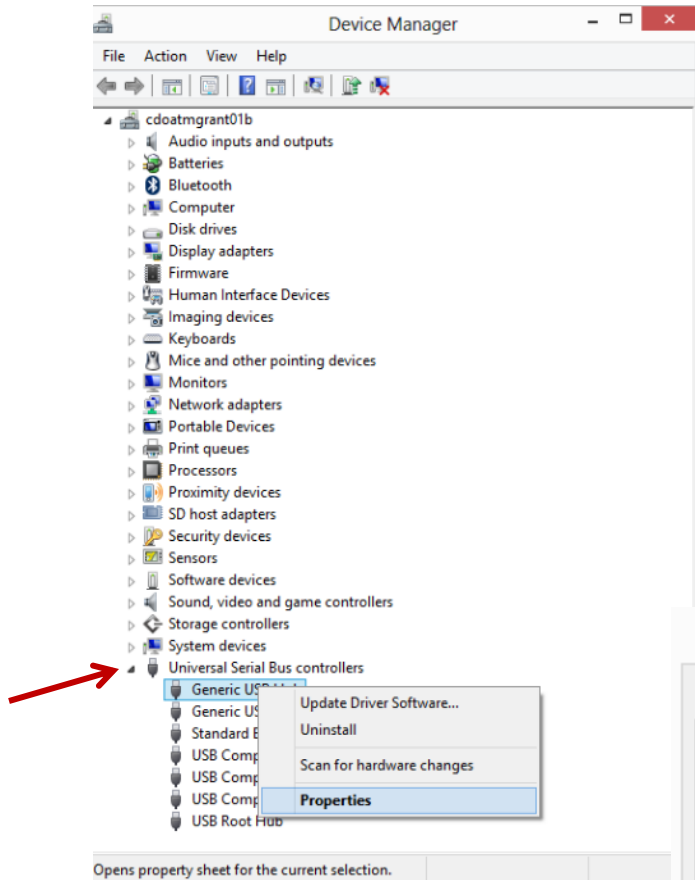


8. Now select “Qualcomm Atheros AR6004 802.11a/b/g/n Wifi Adapter”. Right click and select “properties” and left click it one time.

9. Select the “Advanced” tab, in the Property: windows select “Power Save” and change the value from DEFAULT to Maximum Performance. Then click “ok”.

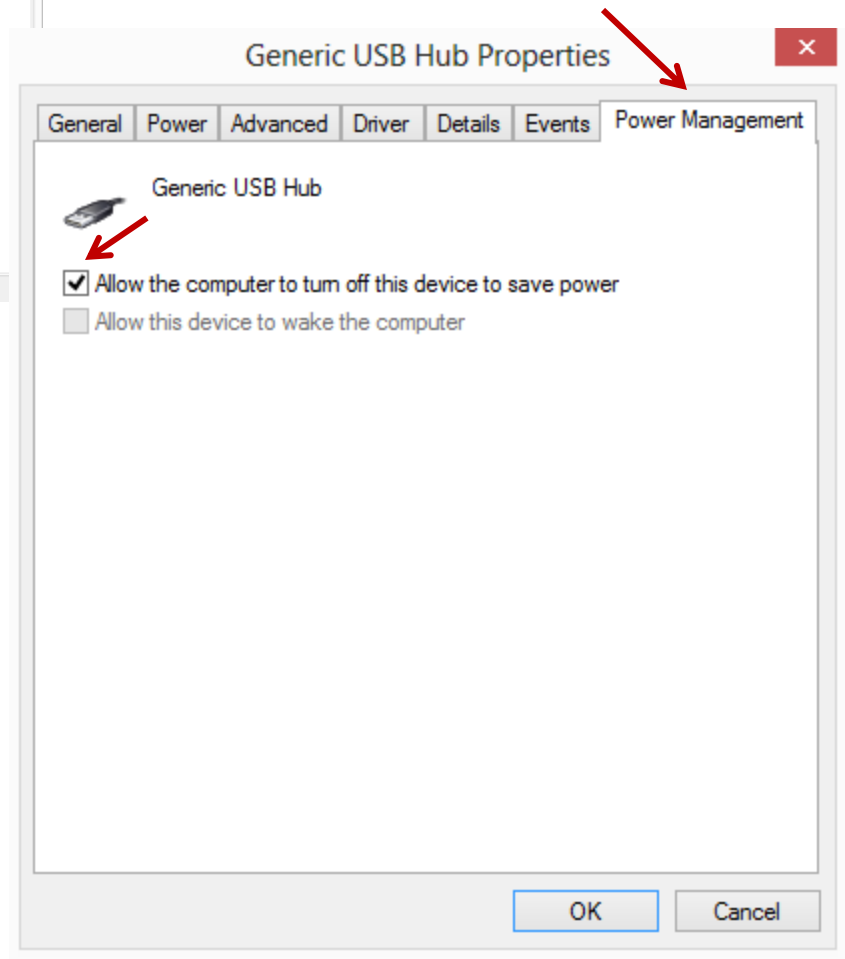


10. Click the arrow out beside Universal Serial Bus controllers.



11. Now left click each on USB Hub and right click and select properties.

12. Select the "Power Management" tab and uncheck the "Allow the computer to turn off this device to saver power". Once done click "ok" and move on to the next one.



13. Do this for each USB Hub you have in your Device Manager.

